



THE GUASTAVINO HOUSE
BAYSHORE, NEW YORK

Daniel
Gale

Sotheby's
INTERNATIONAL REALTY



THE GUASTAVINO HOUSE

Along the South Shore of Long Island in the hamlet of Bay Shore is an area known as Penataquit Point where homes of impressive architecture were built between the 1880's and the 1920's. Awixa Avenue, which parallels the Eastern shore of Penataquit Point, is known for some of the most significant homes in the area such as the W. H. Wray house, Awixa Castle, Hulse House and the Guastavino House.

PROPERTY

The unusual architecture of the Guastavino House, which is referred to in some publications as the "Tile House", attracts a great deal of attention. Built in the Moorish style in 1912 by Rafael Guastavino, Jr., it is used as a landmark by small craft owners on the Great South Bay. The complete exterior of the house is cloaked in monochromatic fireproof square tiles with brick frames and accents. A cornice of stepped-in brick squares is capped with carved wooden brackets in some sections and brick brackets in others supporting a traditional hip-gabled tile roof. A wrought iron railing defines a second story balcony which reflects a Persian influence formed by chevron designed columns adorned with decorative Egyptian style acanthus leaf capitals supporting elaborate tile arches. Semicircular brick arches accent major windows and doorways. Chimneys are capped with miniature arches and pitched roofs which typify Mediterranean architecture. The property encompasses 1.26 acres incorporating 230 bulkheaded feet of direct waterfront on the Great South Bay and commanding sweeping panoramic views across to Fire Island.

The property is screened from the street by a tall hedge. From the wide brick terrace on the back of the house, a built-in fountain spouts into a decorative semi-circular reflecting pool. The focal point in the center of the yard is a large circular fish pond. Between the house and the waterfront is a lengthy pergola bearing the original 1913 grape vine which still thrives annually. A boat house in the side yard was Guastavino's tile workshop. His kiln remains in a side room. The structure includes an additional room and a half bath. Today the boathouse provides storage for small craft or it serves as a two car garage.

Raphael Guastavino I Moreno Sr. came to New York from Spain in 1881 with his son by the same name. A well known architect, Raphael Sr. patented the "Tile Arch System" or "timbrel system", a technique of self-supporting arches and vaults formed by interlocking fireproof terracotta tiles in a herringbone pattern. Raphael Jr. eventually continued the company into the 1960's. Among the Guastavino projects are the Boston Public Library, the Nebraska State Capitol, and the Biltmore estate in Ashville, NC. Of his 360 projects in New York City, most notable are New York's City Hall station, Grand Central Terminal, Carnegie Hall, Grant's Tomb, Ellis Island, the Museum of Natural History, Temple Emanuel, St. Bartholomew's, and the transept dome in the Cathedral of St. John the Divine.

The Guastavino House created in 1912 is part of this lineage. The house exemplifies the aesthetic essence of the art of the ceramic tile and its structural attributes. All the original fireproof exterior tiles and interior tiles were made by Guastavino and remain today carefully treasured and maintained in the principal rooms. The house was inherited by Guastavino's daughter when she married Frank Gulden of Gulden's Mustard. There have been only three owners in nearly a century. The house is offered with the original construction plans and drawings, 1912 photographs of the construction process, along with extra and experimental Guastavino tiles. Additional information about Guastavino and a display of his works may be found via an Internet search by his name and the address of the house.

FIRST FLOOR

The eclectic house is entered through a paneled walnut door set in a colorful tile framed portal. The entry hall is lined with pale tile walls above a terra cotta tile floor while a fascinating vaulted ceiling of mixed green tiles displays the signature herringbone pattern. Crests and creatures are carved into four walnut doors: one gives access to the cloak closet and powder room in the service hallway, a second to the telephone room, and a pair which open to the living room. Here, the walnut paneled walls separate the intriguing tile floor banded with polychromatic tiles and the coffered ceiling of cobalt blue tiles. The focal point of the room is the tile fireplace surround supported by serpentine gilded mosaic columns and a mantel faced with a treasury of decorative tiles depicting griffons and shields. These tiles are repeated in the frieze over the entry doorway and include the Spanish national motto, "Plus Ultra", encouraging people to take risks and to go "far beyond".

A sun room with arched French doors enjoys expansive views of the Great South Bay. Terra cotta tiles vary from medium to light shades on the floor and walls. Four blind arches support the basket weave pattern of contrasting tiles on the renowned vaulted ceiling. Bands of turquoise tiles accent the arched glass doors and windows. The formal dining room with tapestry upholstered walls above a dado of hexagonal tiles, has a cream ceramic tile vaulted ceiling bordered with a pastel palette of art deco tiles in a fantasy motif. A ceiling medallion with a carved gold eagle supports the crystal chandelier. The wall sconces are Steuben glass.

Central to the house is the stair hall lined with an extravagant leitmotif of interlocking quatrefoil and eight-pointed star shaped turquoise tiles. The barrel ceiling and walls are accented with a sprinkling of colorful Aztec inspired mosaics. An unusual bas relief tile depicting a man on a horse is strategically placed. Above the main stairway an arched leaded glass window depicts the Spanish countryside.

Leading to the kitchen is the butler's pantry outfitted with the original cabinetry. Bright white tiles line the eat-in kitchen with barrel ceiling over the preparation area. Modern appliances compliment the style of the house. The laundry room, back entrance and back stairs complete the kitchen area.

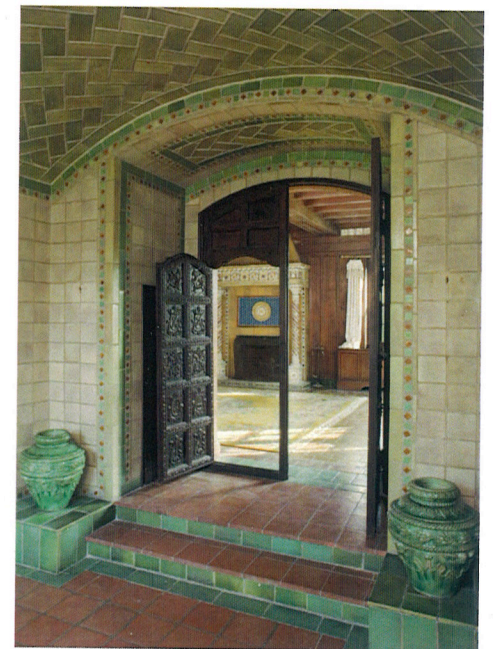
SECOND FLOOR

At the top of the main stairway, one wall of the large upper hall is lined with storage cabinets and linen closets. Throughout the house the original glass doorknobs and other

hardware have been preserved. The front-back master suite includes a large two-room master bedroom overlooking the Great South Bay. The corner fireplace showcases hand painted ceramic tiles of birds, flowers and various caricatures. Outside on the exotic balcony, intricately designed Art Deco columns create a triptych of Persian style arches and vaults with a cobalt blue fascia. The newly renovated white tile master bath presents an impressive double vanity with marble countertop and a whirlpool tub plus shower nestled in a wide tile arch. An additional room, suitable as a sitting room, dressing room or office, completes the suite. A second bedroom is situated on the front corner of the house. The third bedroom includes a new ensuite dual entry bath with tub and shower. The fourth bedroom, with new ensuite bath with shower, has access to the back stairway. Off this room, a private veranda overlooks the back yard and the Great South Bay.

THIRD FLOOR

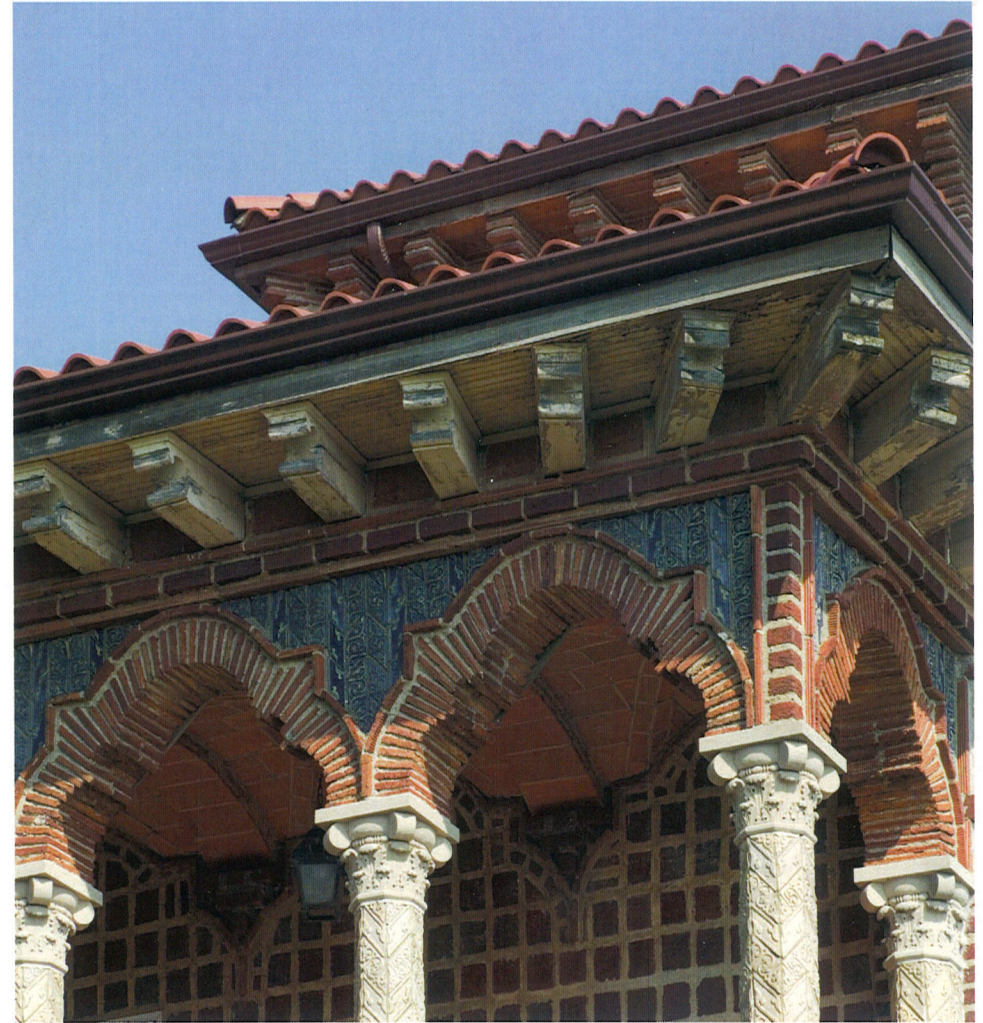
The stunning wood paneled fifth bedroom is located on the third floor of the tower with a dramatic two-story high beamed ceiling and a pair of Romanesque arched windows overlooking the bay. Above the mantel of the soaring ceramic tile fireplace is a border of hand painted storybook style tiles depicting flora, fauna and characters. The fascia of the mantel is a colorful arrangement of quatrefoil, octagonal and Art Deco inspired tiles. This room was originally Guastavino's office and could easily be a library or office. Adjacent to this room is a cedar closet and extensive attic storage.





LOCATION

Bay Shore became known in the late 19th century as a resort area. The development of the Long Island Railroad made Bay Shore an easy escape from city life. When ferry service to Fire Island was established, Bay Shore became the point of embarkation which remains today. Main Street provided an endless variety of shops. Today, Bay Shore is home to the South Shore Mall. Bay Shore is easily accessed by the Southern State Parkway and the Sagtikos Parkway. MacArthur airport is 12 miles away. The Montauk branch of the Long Island Railroad reaches New York in 1 hour and 10 minutes and also services points east. Students in the area attend the Bay Shore Schools.



Daniel
Gale

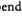
Sotheby's
INTERNATIONAL REALTY

Inspection by appointment only.

Photos by Peter Edson

MLS# 2226778

danielgale.com

This material is based upon information that we consider reliable, but because it has been supplied by third parties, we cannot represent that it is accurate or complete, and it should be relied upon as such. This offering is subject to errors, omissions, changes, including price, or withdrawal, without price © MMV Sotheby's International Realty Affiliates, Inc. All Rights Reserved. Sotheby's International Realty is a licensed trademark of Sotheby's International Realty Affiliates, Inc. An Equal Opportunity Company. Equal Housing Opportunity . Each office is independently owned and operated, except offices owned and operated by NRT Incorporated.

Bonnie Williamson

Licensed Associate Broker

187 Park Avenue

Huntington, NY 11743

631.427.6600 ext.210, c.516.443.5958

bonniewilliamson@danielgale.com